

4. How to input all the necessary Commands to the Centauri

You can type in all the necessary commands with help of the Centauri remote control software. Just step to remote item <Expert/Direct Command>.

Maybe you get asked for a super user password. This super user password is determined by the first use of Centauri remote on your PC. If the super user gets lost you can recover it very easily.

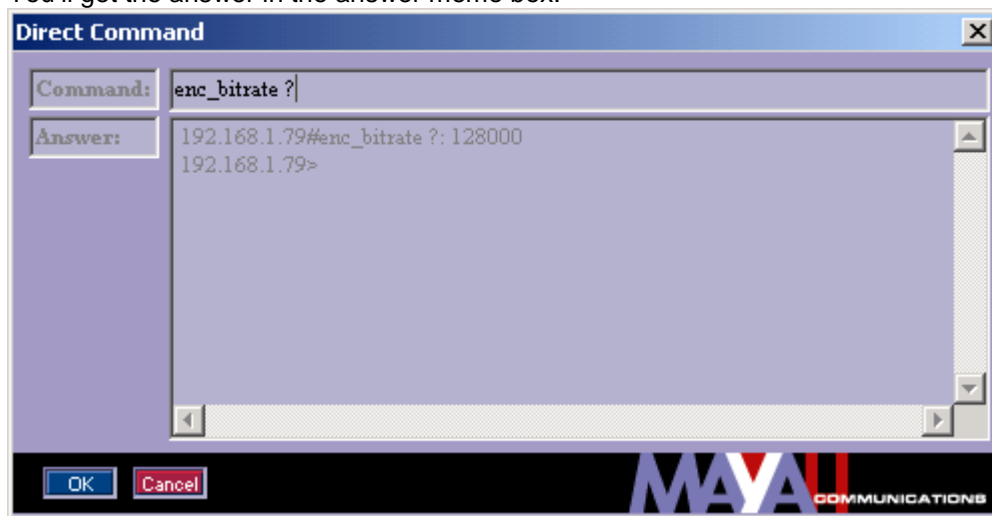
It is saved in the registry at:

HKEY_CURRENT_USER\Software\Mayah Communications\Centauri Remote\SuperUserPassword.

How to use the direct command dialog:

Just type in the Centauri command in the command edit field and confirm by pressing the 'OK' button.

You'll get the answer in the answer memo box.

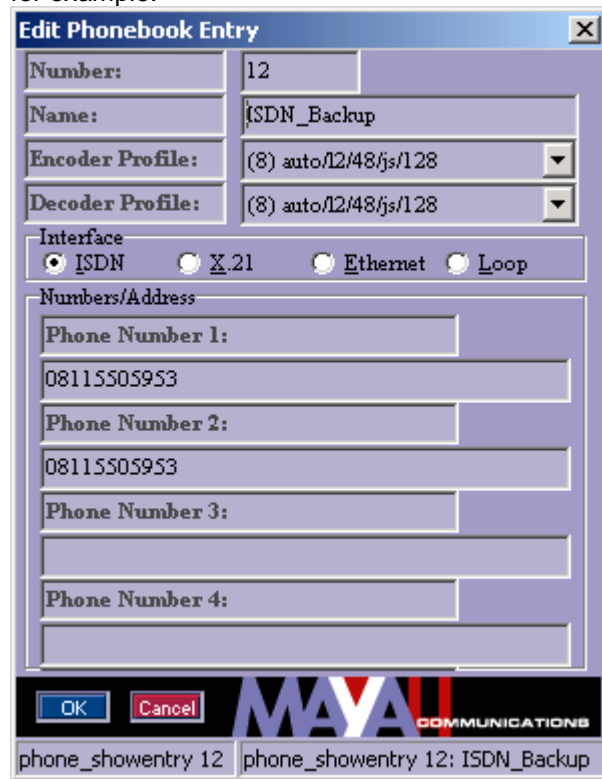


5. Necessary Commands

Create the following phonebook entry on the first Centauri

To create a phonebook entry via remote control at the first Centauri, first press the 'PHONEBOOK' button and then the 'NEW' button. After this enter the following phonebook entry:

```
Backup_ip
<number of encoder profile>
<number of decoder profile>
isdn
phone number 1
phone number 2
..
for example:
```



Finally confirm the new phonebook entry by pressing the OK button.

Define the action 'isdnback' at first Centauri

Direct command:
 'action_create isdnback event_reset framed_off 1;com_disconnect 0;com_waitmsecs 3000;com_interface isdn;phone_execentry <number of above created phonebook entry>;event_set connect_off 1 normal true'

Define the action 'normal' at first Centauri

Direct command:

```
'action_create normal event_reset connect_off 1;com_disconnect 0;com_waitmsecs 500;com_interface x.21;enc_slave local;enc_bitrate 256000;com_waitmsecs 500;com_connect 1;event_set framed_off 1 isdnback true'
```

Define the action 'isdnback'at second Centauri

Direct command:

```
'action_create isdnback event_set framed_off 1 normal true;com_waitmsecs 4000;com_disconnect 1;com_waitsecs 1000; com_interface isdn'
```

Define the action 'normal'at second Centauri

Direct command:

```
'action_create normal com_disconnect 0;com_waitmsecs 3000;com_interface x.21;enc_slave remote;enc_bitrate 256000;com_connect 1'
```

Event programming at first Centauri

Direct command:

```
'event_set framed_off 1 isdnback true'
```

Event programming at second Centauri

Direct command:

```
'event_set framed_off 1 normal true'
```

Save the events at first and second Centauri

Direct command: 'event_save'