

# MAYAH Communications

## Application Note 12

### Streaming Server with different Media Players

1 Streaming.....	1
2 Windows Media Player .....	2
3 Real Player.....	2
4 Winamp.....	3
5 Audio Quality .....	4



#### 1 Streaming

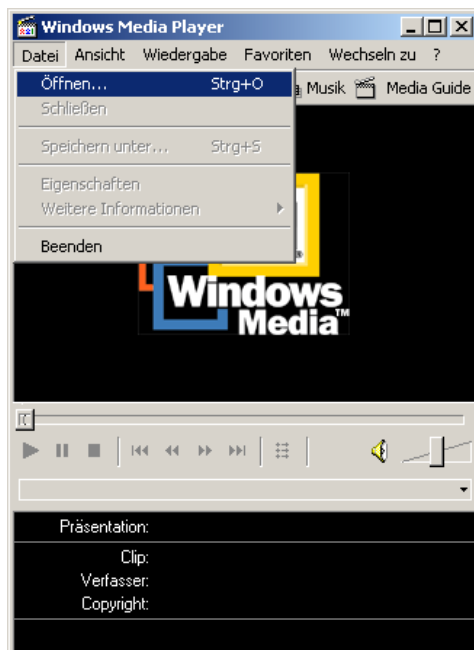
With the Streaming Server MAYAH aims to provide a new audio web server concept that minimizes administration costs while maximizing the number of listeners that can be reached simultaneously – simply connect the audio, set the IP address and stream ahead.

The Streaming Server is able to generate up to 4 different-coded audio streams (encoder algorithms) at the same time. The generation of the streams can be executed from any web client/player by running HTML-command files stored in the WWW directory of the addressed MAYAH codec.

These HTML-command files contain information about slot number, algorithm, sample rate, bit rate and mode of the audio stream. For detailed information see Application Note 6, Webserver HTTP Streaming.

In this Application Note, Windows Media Player, Real Player and Winamp exemplify how to use the Streaming Server with different Media Players.

## 2 Windows Media Player



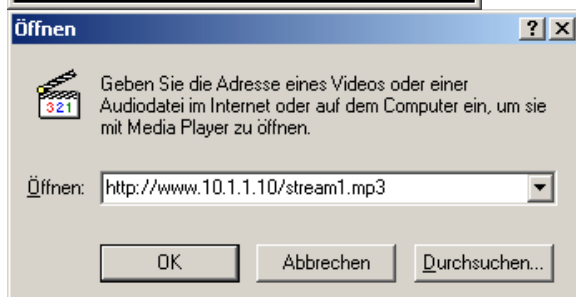
For receiving an audio stream from a Centauri 4001 Streaming Server with the Windows Media Player you just have to go to the *File* menu. Then click on the menu item *Open* and the Open-dialogue will be visible.

Now you have the possibility to enter a URL with the name or IP-address of the Centauri Streaming Server and the stream file you want to receive.

Examples:

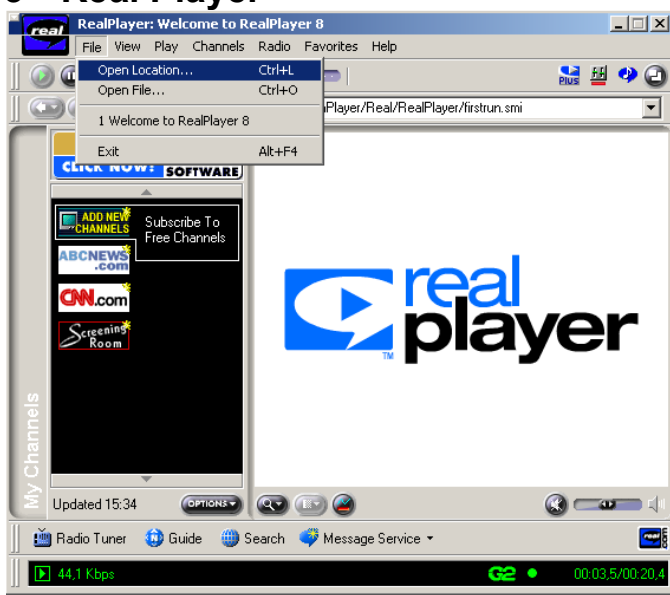
<http://www.10.0.0.255/stream1.mp3>

<http://www.CentauriBsp/stream2.wav>



This causes a search on the D-partition of the Centauri for the specified stream file which will then be streamed to the requesting Windows Media Player.

## 3 Real Player

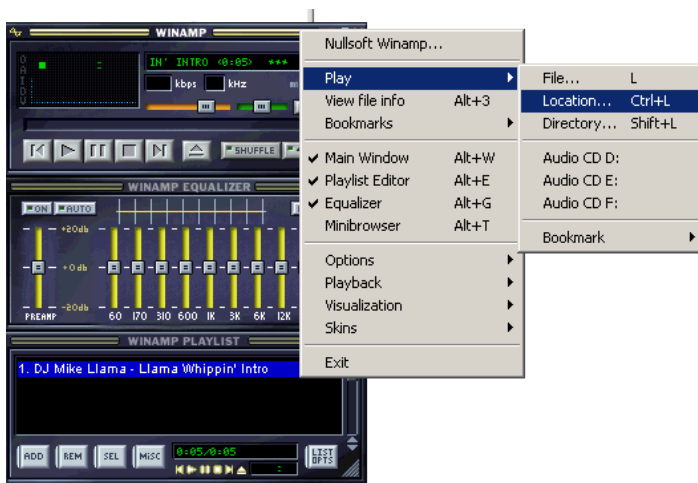


Using the Real Player, the procedure to receive a stream from a Centauri Streaming Server is almost the same. Click on the *File* menu item to open the popup menu and then click on *Open Location*.

Again there will be opened a dialogue for to enter a URL with the specific Centauri address and stream file.

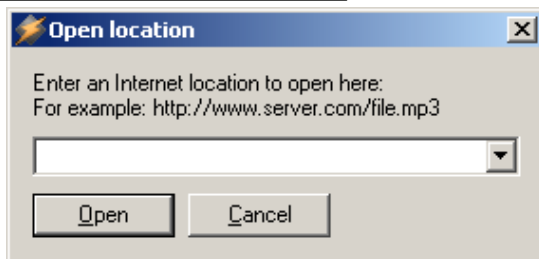


## 4 Winamp

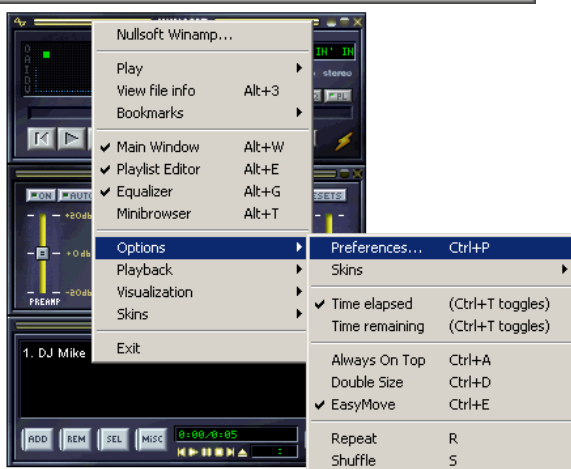


The design of the Winamp application differs from that of the other programs. So the steps to get a connection to a Centauri Streaming Server differ a little bit, too.

To open the popup menu, here, you have to click on the right mouse button while the mouse pointer is located above the Winamp-window. There will be different popup menus depending on the position of the mouse. The required popup menu you will get, if the mouse pointer is positioned on the top or bottom area as well as on the equalizer area.



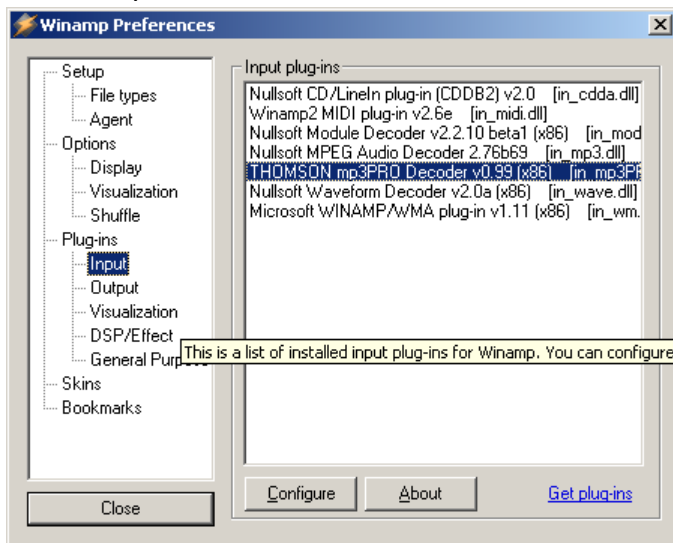
If you now place the mouse above the menu item **Play**, another popup menu is activated. Choose **Location** and, just as with the other Media Players, a dialogue will open. Here you can enter the URL of the required stream, like described above, and you will get connected to the Centauri 4001 Streaming Server.



## 5 Audio Quality

At this time mp3 defines the most common algorithm for audio coding. So Windows Media Player and Real Player can only decode mp3-streams. On the other hand, Winamp has the additional ability to decode mp3Pro which features only half the bit rate of mp3 at the same audio quality. For this it is necessary to install so-called Plug-ins.

Click the right mouse button, when it is positioned on the same areas as described above, place the mouse on the menu item **Options** and click on **Preferences**, when the next popup menu is opened.



Now you'll get a window which shows a list, containing the available input plug-ins which can be configured by selecting and pressing the **Configure** button. For configuring mp3Pro, select **THOMSON mp3PRO Decoder**.